

Datacolor WEIGH

Installation Guide

Datacolor MATCH^{WEIGH}™ Stand-Alone Installation Guide (July, 2021)

All efforts have been made to ensure the accuracy of the information presented in this format. However, should any errors be detected, Datacolor appreciates your efforts to notify us of these oversights.

Changes are periodically made to this information and are incorporated into forthcoming versions. Datacolor reserves the right to make improvements and/or changes in the product(s) and/or program(s) described in this material at any time.

© 2008 Datacolor. Datacolor, SPECTRUM and other Datacolor product trademarks are the property of Datacolor.

Microsoft and Windows are either registered trademarks of Microsoft Corporation in the United States and/or other countries.

To obtain information on local agents, contact either of the offices listed below, or visit our website at www.datacolor.com.

Support Questions?

If you need help with a Datacolor product, please contact one of our top-rated technical support teams located around the world for your convenience. You can find contact information below for the Datacolor office in your area.

Americas

+1.609.895.7465
+1.800.982.6496 (toll-free)
+1.609.895.7404 (fax)
NSASupport@datacolor.com

Europe

+41.44.835.3740
+41.44.835.3749 (fax)
EMASupport@datacolor.com

Asia Pacific

+852.2420.8606
+852.2420.8320 (fax)
ASPSupport@datacolor.com

Or Contact Your Local Representative

Datacolor has representatives in over 60 countries.

For a complete list, visit www.datacolor.com/locations.

Manufactured by Datacolor
5 Princess Road
Lawrenceville, NJ 08648
1.609.924.2189

Committed to Excellence. Dedicated to Quality. Certified to ISO 9001 in Manufacturing Centers Worldwide.

Contents

1 INSTALLATION OVERVIEW.....	3
SYSTEM REQUIREMENTS	3
Before you begin	4
2 INSTALLATION PROCEDURE	5
3 VALIDATING DATACOLOR SOFTWARE.....	18

1 Installation Overview

This document describes the installation of Datacolor Software to your computer's hard disk. If you have purchased your computer from us, the software will be already installed. If you purchased your own computer, follow these instructions to install our software on your computer.

Before you begin the installation, you should have all installation USB's, and Microsoft Windows* should be properly installed on your computer.

1.1 System Requirements

The system requirements shown below are the minimum configuration to ensure effective operation of the standard Datacolor Weigh software. Configurations below stated requirements may work but are not supported by Datacolor.

Microprocessor	Pentium IV 1.9 GHz processor require
RAM	512 MB minimum 1 GB is recommended, and for generally increased performance.
Hard Disk	Minimum of 2 GB free disk space.
Video Monitor/ Graphics	16 MB, high-resolution graphics card. Color patch displays require 1024 x 768 (small font) or better.
Printer	Windows supported printers: Ink Jet, Laser Printers. Dot matrix printers are not supported.
Mouse	Required.
Microsoft Windows	Windows 2000 Professional, WIN XP Pro, Windows 10
Network	Networks that are 100% windows compatible. Datacolor MONITOR operates on networks compatible with the Microsoft Windows operating systems by using the application layer of the network operating system.

Before You Begin

- Microsoft Windows® should be properly installed on your computer.
- You must have Windows Administrator rights to install this software.
- **Restart the system before installing the software.** This removes any memory-resident modules that may interfere with the installation, and is especially important if you have been running a previous version.
- Install Sybase V12 database management software.
- Close all other programs that are running.
- Have all program installation readily available.

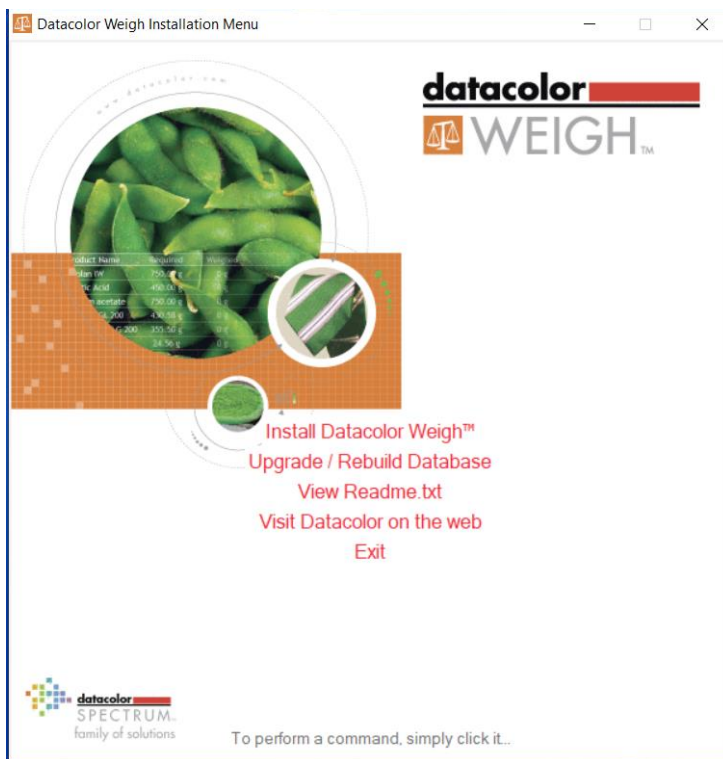
Important, Before You Begin! *You must have Administrator Rights to install this software and you must have installed Sybase first!*

2 Installation Procedure

To install Datacolor Weigh

1. Place the Datacolor Weigh USB into the port.
2. Select the Menu.exe

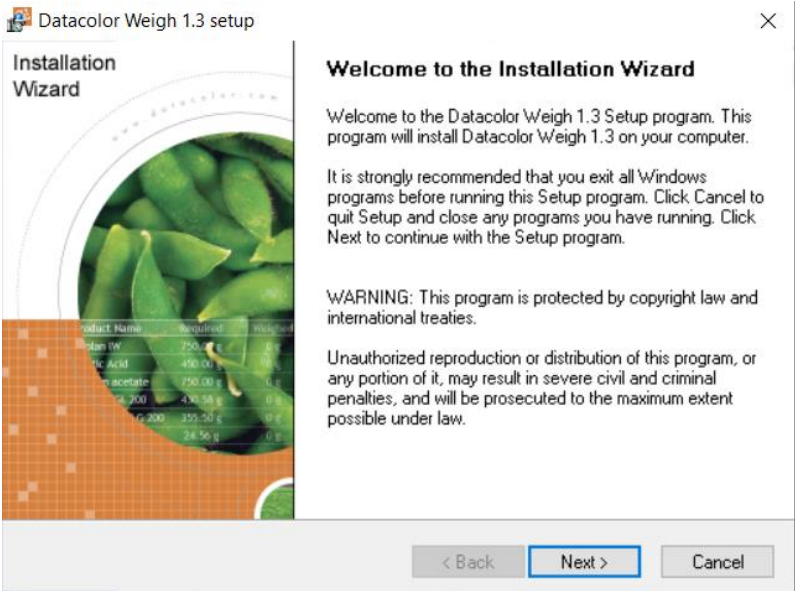
The Main Installation menu should appear automatically:



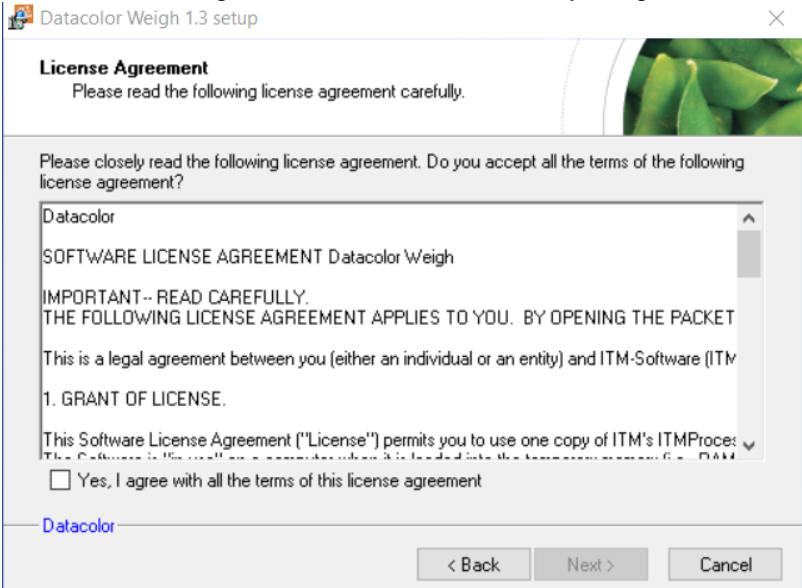
Select Install Datacolor Weigh

When the Main Installation Menu is displayed, choose **“Install Datacolor Weigh”** The Datacolor Weigh installation will guide you through installing Datacolor Weigh on your computer

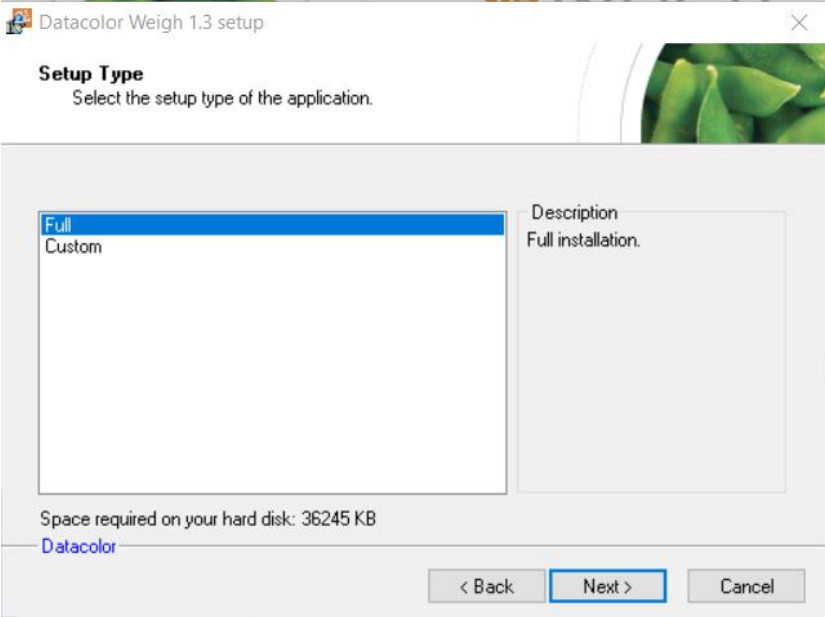
Click **“Next”**. The installation wizard will start - follow the prompts to install Datacolor WEIGH on your computer.



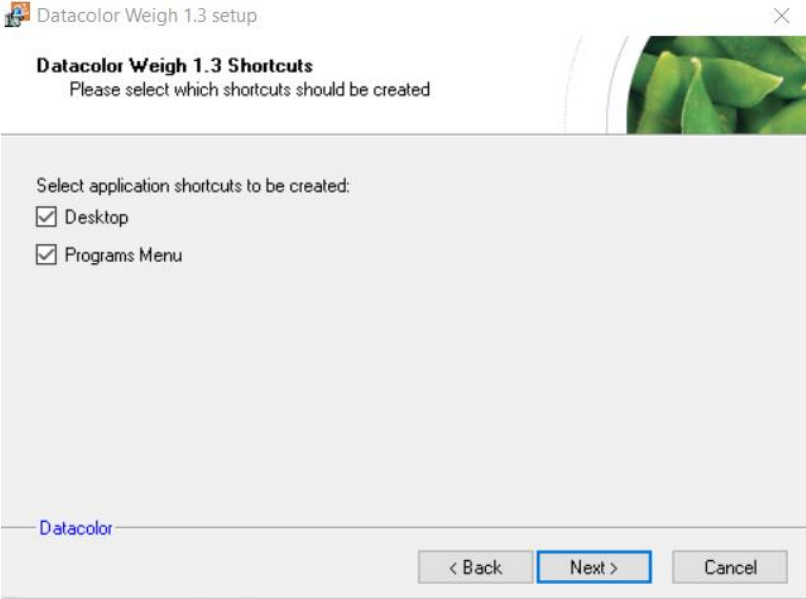
Review License Agreement, and select Yes – If you agree. Then click Next.



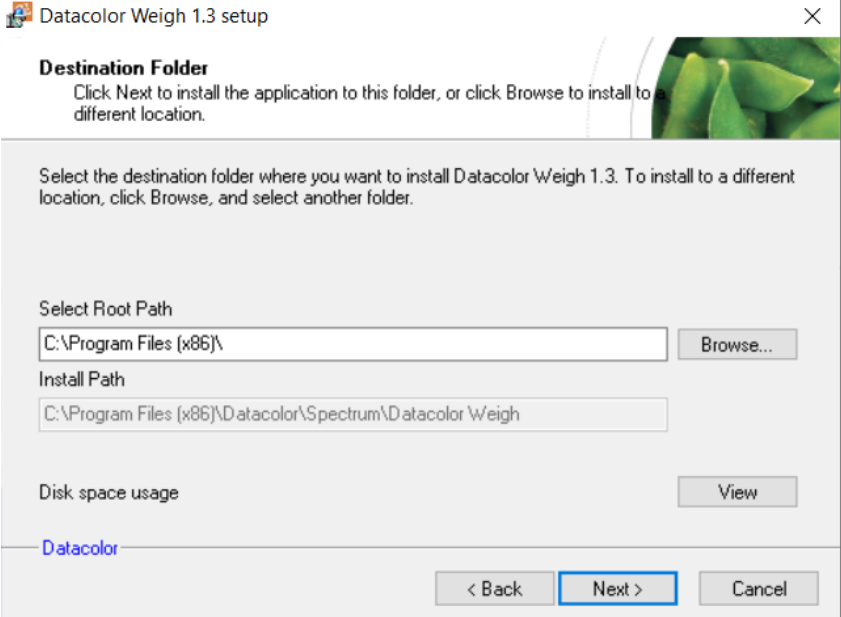
Select Setup Type (Full or Custom) and click Next



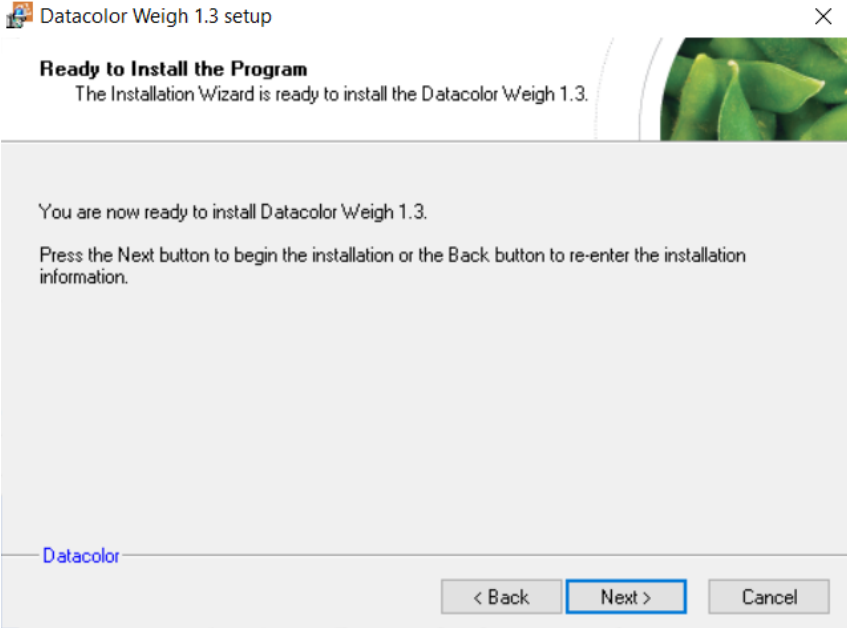
Select Windows Desktop options and click Next



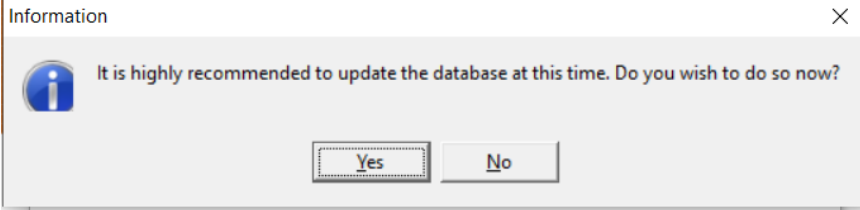
Click **Next** to select default installation folder



Click Next to install Datacolor Weigh



It is recommended to update your database



Login to you dci_itm database with your User Name and Password, click OK


Database Login ✕

Database:	dcj_itm
User Name:	<input type="text" value="DCI"/>
Password:	<input type="password"/>

Your Installation is complete

 Datacolor Weigh 1.3 setup ✕

Installation Wizard



Installation Complete

Datacolor Weigh 1.3 has been successfully installed.

Press the Finish button to exit Setup program.