

Volume change in template

Overview

Concerned User, Supervisor

Subject How to change the bath volume inside a recipe template.

In Job ticket, it is not possible to change the volume in Operation. But it is possible to introduce a factor in the Recipe Template call-off.

The call-off volume will be equal to the dyelot volume multiplied by this factor.

General

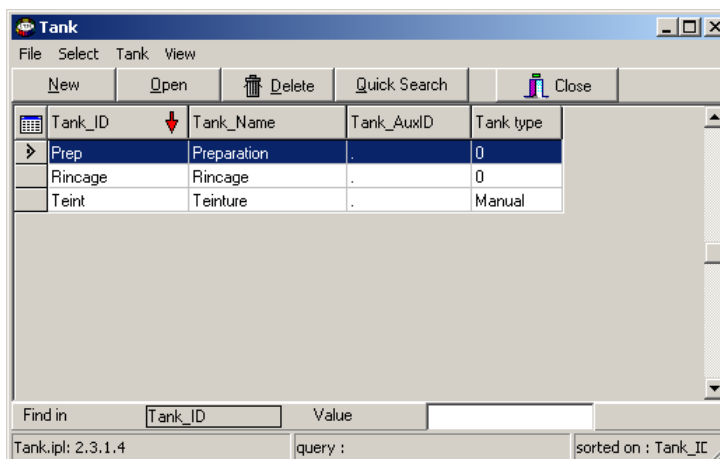
Version

The call-off factor feature is available since ITMProcess JobTicket v2.3.2. Current document has been written at ITMProcess JobTicket v2.3.2.

Configure

Tank

In order to print the volume of the call-off, the use of a tank is necessary. Create a tank for each kind of call-off.



Use

Create a recipe template.

For each volume change, insert a call-off, indicate the tank and insert the volume factor.

Ex: 0,5 for the half of the dyelot volume.

ID	Name	Value	Unit	Note	Tan...
1				-----Preparation-----	-
2	Prep	Preparation	0,5 l		-
3	COTNSR	Cotoblanc NSR	1 ml/l		
4				-----DYEING-----	-
5	Teint	Teinture	1 l		-
6	BYE S3R	Bezaktiv Yellow S-3R 150%	1,37601 %		
7	BRD S3B	Bezaktiv Red S-3B 150%	0,49384 %		
8	BGN S4B	Bezaktiv Green S-4B	0,00407 %		
9	NaCl	Common Salt	20 g/l		
10	T	Time	15 min		-
11	TEMP	Temperature	60 °C		-
12			1 l		-
13	NaOH38	Caustic Soda 38° Bé	50 ml/l		
14	Soda	Soda ash	10 g/l		
15	D-T	Dyeing Time	45 min		-
16				Take Sample	-
17				-----RINSING-----	-
18	Rincage	Rincage	0,5 l		-
19				Fill Water	-
20	TEMP	Temperature	70 °C		-
21	R-T	Rinse Time	15 min		-
22				DRAIN	-
23	S-Soft	Supersoft	1 g/l		
24	R-T	Rinse Time	10 min		-
25				DRAIN	-

When you print the dyelot, the production card indicates the call-off volume and calculates the product quantities according to this volume.

AFS1		AFS1		Volume 1500 l	
				Liquor ratio 1/10	
1. Preparation		-----Preparation-----		Volume 750 l	Vat
COTNSR	Cotoblanc NSR	1 ml/l	750 ml		
		-----DYEING-----		Volume 1500 l	Vat
2. Teinture					
BYE S3R	Bezaktiv Yellow S-3R 150%	1,3760 %	2064,01 g		
BRD S3B	Bezaktiv Red S-3B 150%	0,4938 %	740,75 g		
BGN S4B	Bezaktiv Green S-4B	0,0041 %	6,1 g		
NACL	Common Salt	20 g/l	30000 g		
	Time	15 min			
	Temperature	60 °C			
3. NAOH38	Caustic Soda 38° Bé	50 ml/l	37500 ml		
SODA	Soda ash	10 g/l	15000 g		
	Dyeing Time	45 min			
		Take Sample			
		-----RINSING-----		Volume 750 l	Vat
4. Rincage		Fill Water			
	Temperature	70 °C			
	Rinse Time	15 min			
			DRAIN		
S-Soft	Supersoft	1 g/l	750 g		
	Rinse Time	10 min			
			DRAIN		