

Cost-Effective Color QC Solution



SELECT QC



Reliable Instrumental Color Control

- Attractive Price Point
- Highest Accuracy in Class
- State of the Art Software
- Rugged and dependable
- Scalable Solution
- Lightweight and Portable
- Precise Color Detection
- Industry Conforming

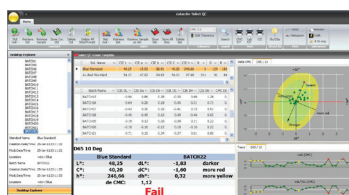
SELECT QC PRECISE AND AFFORDABLE COLOR CONTROL SOLUTION

Datacolor SELECT QC, the accurate and reliable entry-level color QC Solution.

A variety of industrial applications, including plastic processing, require an easy to use, but precise Color QC solution to monitor and report the accuracy of their daily production. Datacolor SELECT QC combines a very precise, portable Colorimeter and the most intuitive and robust Color QC software on the market today. Precise, objective color control at the price point of a light booth, allows industrial users to achieve accurate and repeatable color control. Internal color quality becomes traceable and operational efficiency improves.

FEATURES

- The highest colorimeter accuracy in its class
- Intuitive software for analysis and reporting
- A 45°/0° geometry to read color exactly the same way as the human eye
- 4mm aperture diameter to capture data even on small surface points



The intuitive GUI makes it easy for even new users to quickly use the Software. Configurable Data-Grids, interactive Plots and a crystal clear Pass/Fail Control are all offered on one, easy to read screen.



The SELECT Colorimeter is handy and lightweight, accurate and precise. The produced data, on even very small sample surfaces is in accordance to the visual color inspection.

TECHNICAL DATA	DATACOLOR SELECT QC
Instrument Type	45°/0° instrument with LED array
Aperture	4mm diameter
Captured data	XYZ or CIEL*a*b*, D65/10° or D50/2° observer
Performance	
Short-term repeatability	0.03 CIEL*a*b* (D50/2°)
Inter-instrument agreement (derived using BCRA tileset)	Average 0.4 DE _{94l} , Max 1.0 DE ₉₄

SOFTWARE FEATURES

Illuminants / Observers	CIE D65 or D50 Illuminant, 10° or 2° Standard Observer
Color / Color Difference Scales / Tolerances	Absolute and Delta values, dE for CIE XYZ, xyz, L*, a*, b*, C*, h*, u* v* CIE 94, CMC, CIE DE2000, DIN 99, FMCII, HunterLab
Plots/Graphics	CIELab, CIE Luv, CMC, HunterLab, CIE 94, DIN 99 absolute, Trend, Histogram Chromaticity, interactive zoom function
General Features	Statistic Std. deviation/mean avg. , Pass/Fail descriptors, Verbal Color Difference descriptors, Color Patch, Color Search, Configurable Data Grids
Measurements	Average measurements, Remote Measurements, Automated calibration timeout, manual Data input
Database Functions	Store, retrieve, rename, delete Standards and Batches, Organize Samples in a Folder Structure, Unique Sample Identifiers
Export/Import	Export to ASCII file, Export result data to EXCEL

WORK FLOW	Design	Photo	Cosmetics	Packaging	Ink	Home Entertainment	Automotive	Plastics	Paint & Coatings	Textile	Retail Paint
Create/Design											
Specify											
Formulate and Produce											
Quality Control			■	■	■		■	■	■	■	■

For more information, please visit www.datacolor.com

STANDALONE SYSTEM REQUIREMENTS

Pentium IV at 1.4GHz; 2 GB RAM; 40 GB HDD; 10.1" Laptop Screen at 1024x600 resolution; 128MB true color graphics card; CD drive; 2 USB Ports; Windows® XP Pro (SP3) 32bit, Windows 7, 32 or 64bit.

Committed to Excellence. Dedicated to Quality. Certified to ISO 9001:2008 in Manufacturing Centers Worldwide. ©2011 Datacolor Inc. Datacolor and other Datacolor product trademarks are the property of Datacolor Inc. Windows is either a registered trademark of Microsoft Corporation in the United States and/or other countries.

datacolor